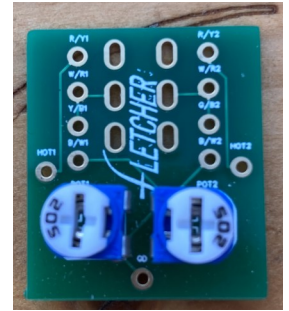




This side Towards the Switch

FLETCHER

Variable Coil Split



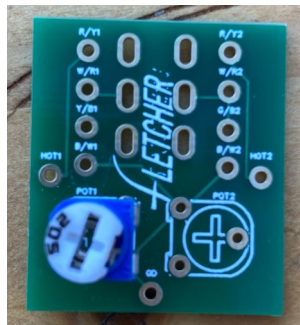
All PCB boards are marked for FletcherPickups wire colours.

Both sides of the board work independently.

Boards supplied with variable resistor(s) as required.
Only use the side of the board with the resistor attached.

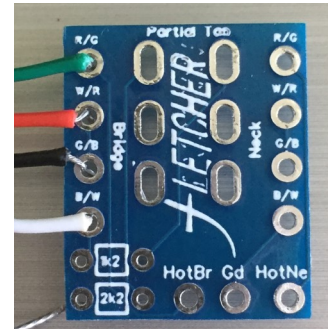
R/G W/R G/B B/W relate to the four lead wires, Red, White, Green & Black. Bare wire to ground always.

R/G Soldering the **bold** wires will drop the **South/bridge-facing** coil.
W/R
G/B
B/W

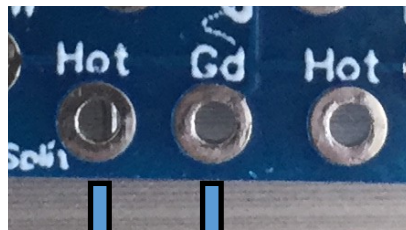


North/Neck coil ON
South/Bridge coil OFF

Soldering the **bold** wires will drop the **North/neck-facing** coil.
R/G
W/R
G/B
B/W

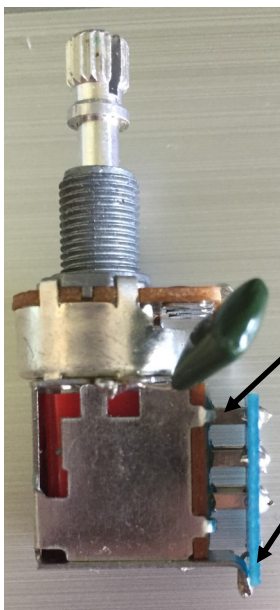


North/Neck coil OFF
South/Bridge coil ON



Output to Switch or Pot, depending on your schematic.

Remember to link the Board, pot & bare wire to circuit Ground.



Leave a gap between the board and the pot base when soldering.

Bend back the metal tag and solder this to the board Ground.

